

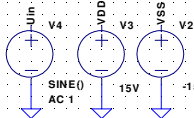
Specs:

Input Impedance (k Ω m): 15

Max Amplification (dB): 44 (x158,5)

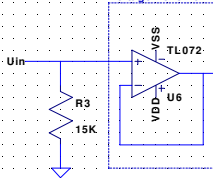
Lower Cutoff Freq (Hz): 60

Upper Cutoff Freq (kHz): 50



.ac dec 100 1 1meg
include extras.lib

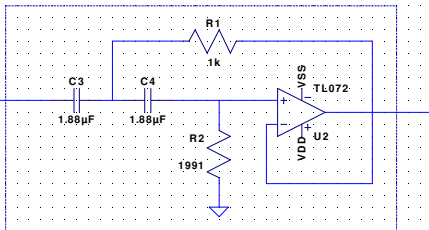
Voltage Follower



HP-Filter @ 60Hz Cutoff

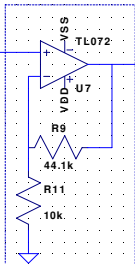
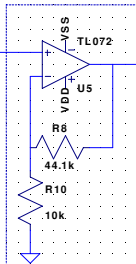
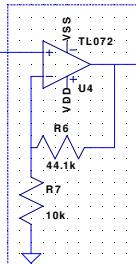
Sallen-Key

Butterworth



Non-Inverting Amplifier 14,66dB (x5,41)

$A_u = (R_1 + R_2)/R_1$



LP-Filter @ 50kHz Cutoff

Sallen-Key

Butterworth

